

Bb - INT

OLEO

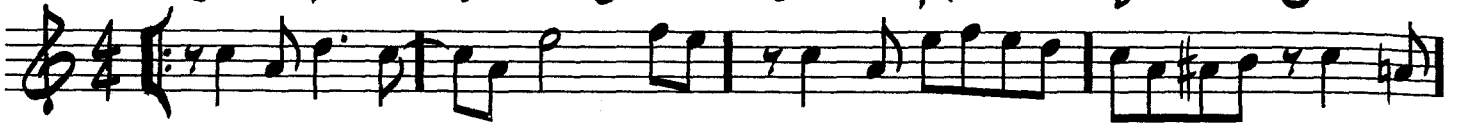
-SONNY ROLLINS

309

(UP)

A

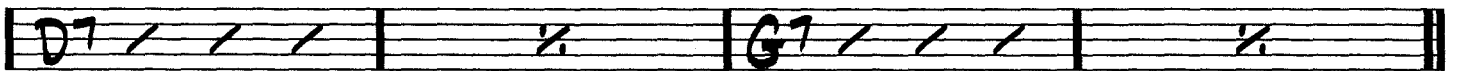
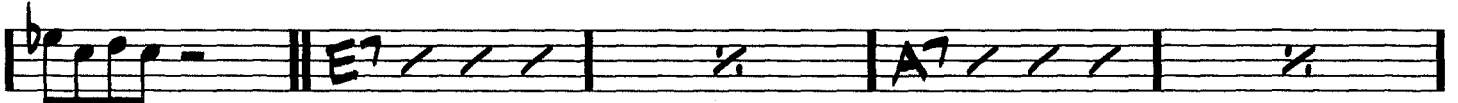
C^b A-7 D-7 G7 C^b A7 D-7 G7



G-7 C7 Fmaj7 F-6 E-7 A7 D-7 G7



². D-7 G7 C^b **B**



A

C^b A-7 D-7 G7 C^b A7 D-7 G7



G-7 C7 Fmaj7 F-6 E-7 A7 D-7 G7 C^b



FINE